

# Finisher-E1/M1

# PARTS CATALOG

REVISION 0

Finisher-E1  
〔 F25 - 2401 ZRZ00001 - 〕

Finisher-M1  
〔 F26 - 1501 XLT00001 - 〕

# Canon

FEB. 1999

# FY8-31E4-000

# FIGURE Q01A MOUNTING HARDWARE (FINISHER-E1)

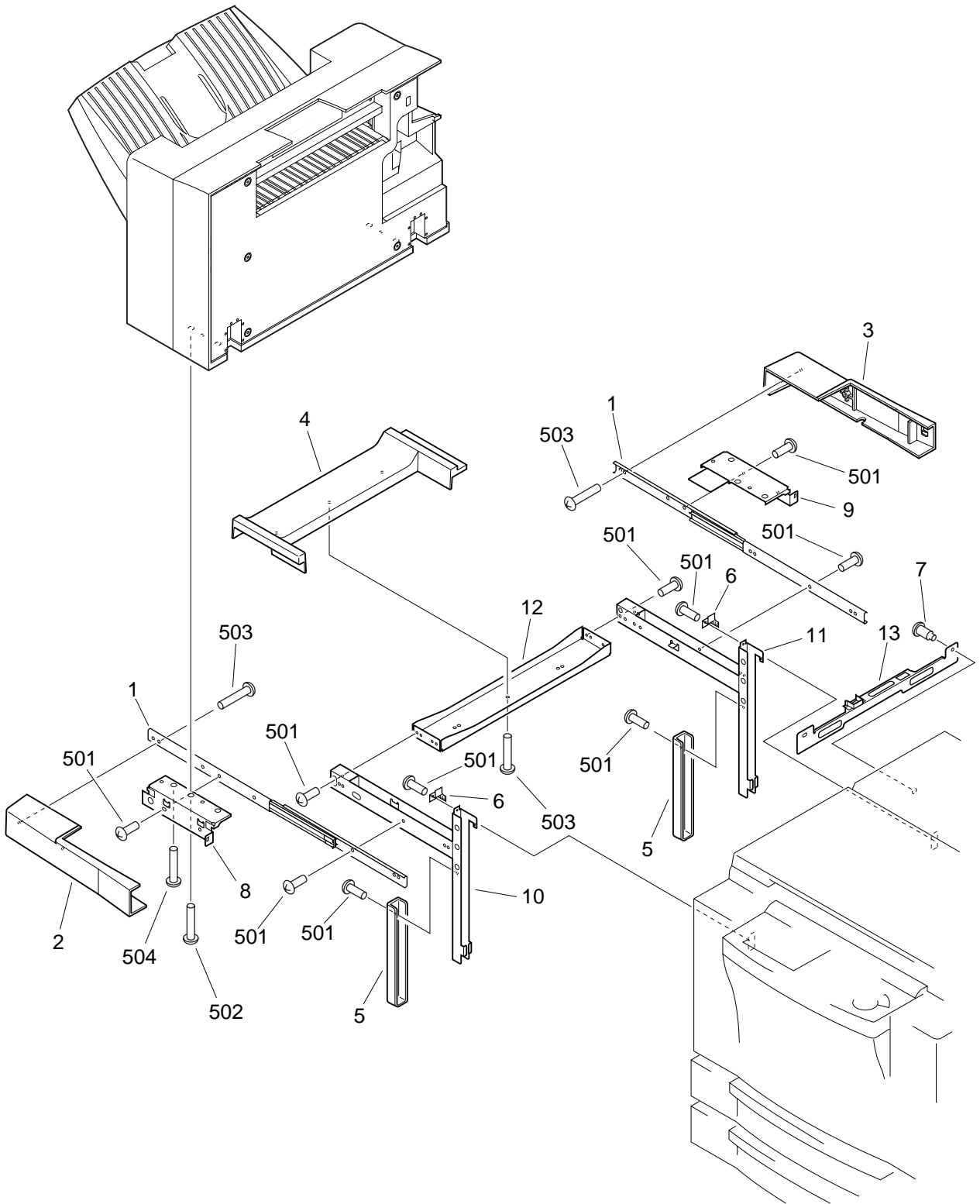


FIGURE & KEY NO.	PART NUMBER	R A N K	Q' T Y	DESCRIPTION	SERIAL NUMBER / REMARKS
Q01A -	NPN		RF	MOUNTING HARDWARE	FINISHER-E1
1	FB5-0745-000		2	RAIL, SLIDE	
2	FB5-0752-000		1	COVER, KIT, FRONT	
3	FB5-0753-000		1	COVER, KIT, REAR	
4	FB5-0754-000		1	COVER, KIT CROSSMEMBER	
5	FB5-0755-000		2	COVER, KIT, LOWER	
6	FB5-0756-000		2	CLAW, KIT FIXING	
7	FS5-9776-000		2	SCREW, STEPPED, M4	
8	FB5-0747-010	N	1	KIT MOVE PLATE (FRONT)	
9	FB5-0748-010	N	1	KIT MOVE PLATE (REAR)	
10	FB5-0749-010	N	1	KIT FRAME (FRONT)	
11	FB5-0750-010	N	1	KIT FRAME (REAR)	
12	FB5-0751-010	N	1	KIT STAY	
13	FB5-0746-000		1	PLATE, LATCH	
501	XB1-2400-606		AR	SCREW, MACH., TRUSS HEAD, M4X6	
502	XB1-2402-509		4	SCREW, MACH., TRUSS HEAD, M4X25	
503	XB4-7401-009		AR	SCREW, TAPPING, TRUSS HEAD, M4X10	
504	XB1-2402-009		1	SCREW, MACH., TRUSS HEAD, M4X20	

# FIGURE Q01B MOUNTING HARDWARE (FINISHER-M1)

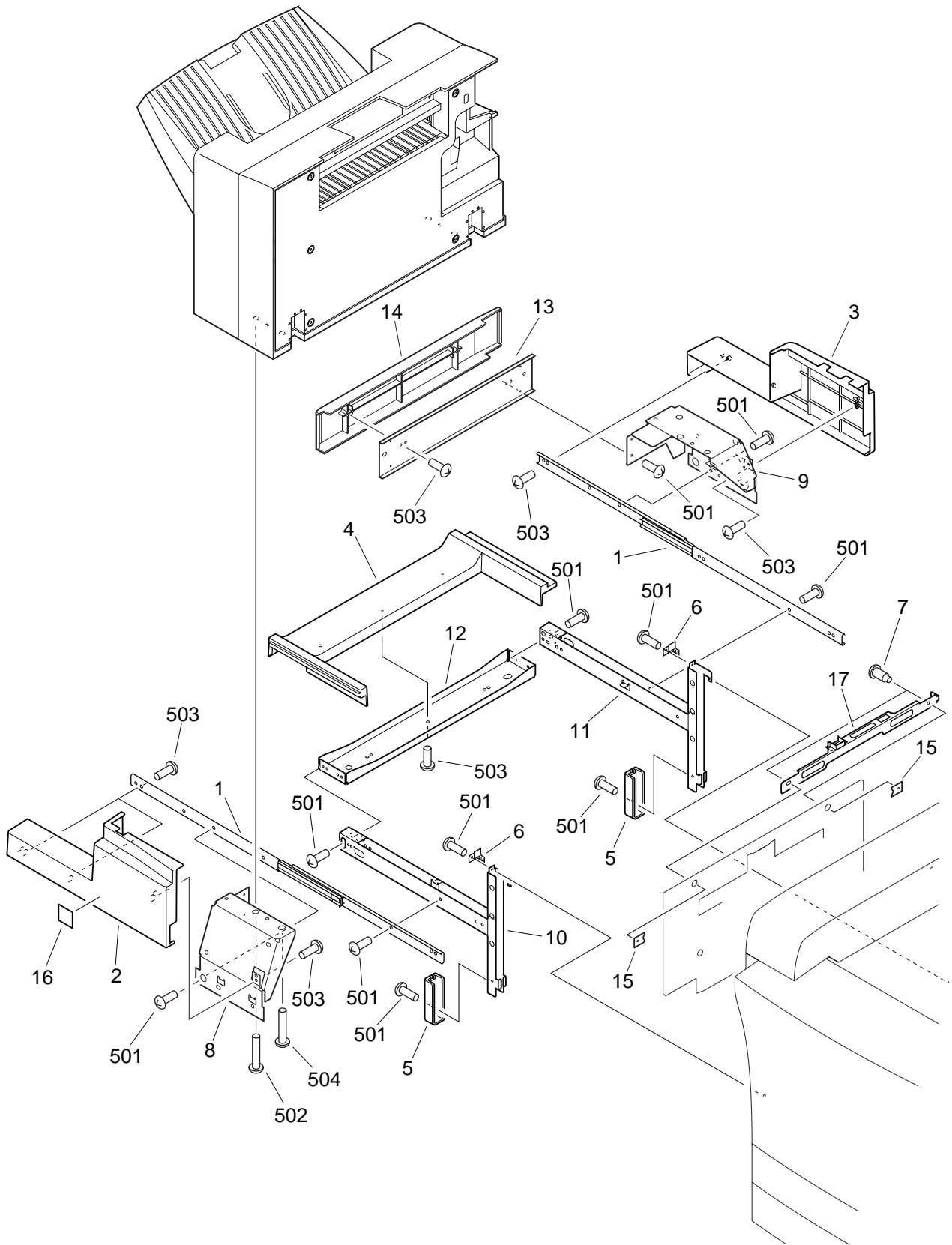


FIGURE & KEY NO.	PART NUMBER	R A N K	Q' T Y	DESCRIPTION	SERIAL NUMBER / REMARKS
Q01B -	NPN		RF	MOUNTING HARDWARE	FINISHER-M1
1	FB6-4166-000		2	RAIL, SLIDE	
2	FB6-4174-000		1	COVER, KIT, FRONT	
3	FB6-4175-000		1	COVER, KIT, REAR	
4	FB6-4176-000		1	COVER, KIT CROSSMEMBER	
5	FB6-4177-000		2	COVER, KIT, LOWER	
6	FB6-4631-000		2	CLAW, KIT FIXING	
7	FS5-9777-000		2	SCREW, STEPPED, M4	
8	FB6-4172-000	N	1	PLATE, SLIDING, KIT, FRONT	
9	FB6-4173-000	N	1	PLATE, SLIDING, KIT, REAR	
10	FB6-4167-000	N	1	FRAME, KIT, FRONT	
11	FB6-4168-000	N	1	FRAME, KIT, REAR	
12	FB6-4169-000	N	1	CROSSMEMBER, KIT	
13	FB6-4170-000		1	PLATE, KIT	
14	FB6-4178-000		1	COVER, KIT	
15	FB6-4179-000		2	PLATE, SUPPORT	
16	FB3-9749-000		1	LABEL, "HANDLE"	
17	FB6-4171-000		1	PLATE, LATCH	
501	XB1-2400-606		18	SCREW, MACH., TRUSS HEAD, M4X6	
502	XB1-2402-509		4	SCREW, MACH., TRUSS HEAD, M4X25	
503	XB4-7300-809		8	SCREW, TAPPING, TRUSS HEAD, M3X8	
504	XB1-2402-009		1	SCREW, MACH., TRUSS HEAD, M4X20	

# FIGURE Q10

## EXTERNAL COVERS, PANELS, ETC.

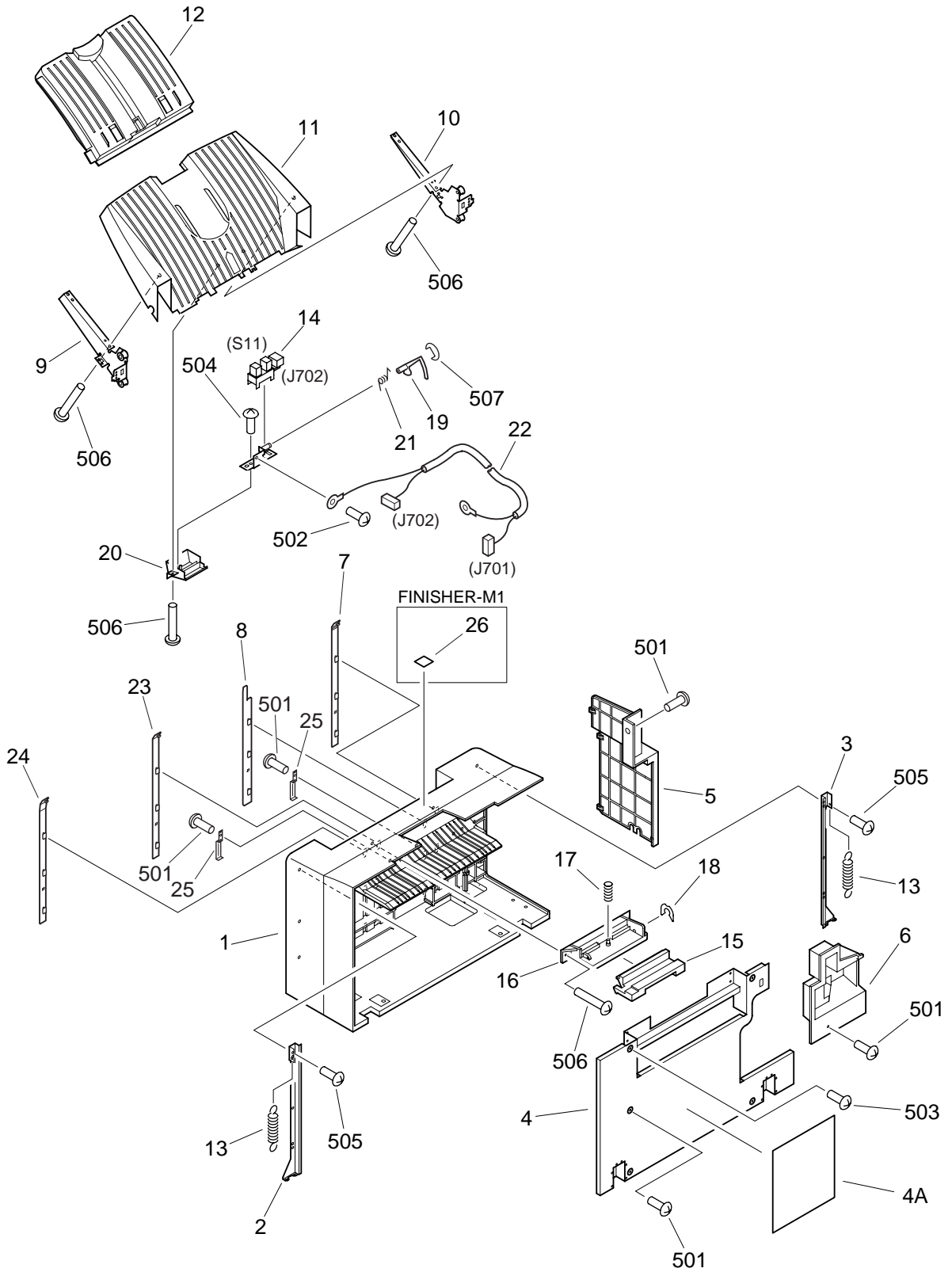


FIGURE & KEY NO.	PART NUMBER	RANK	QTY	DESCRIPTION	SERIAL NUMBER / REMARKS
Q10 -	NPN		RF	EXTERNAL COVERS, PANELS, ETC.	
1	FB5-0577-000		1	FRAME	FINISHER-E1
	FB6-4190-000		1	FRAME	FINISHER-M1
2	FB5-0582-000		1	GUIDE, COLLAR, FRONT	
3	FB5-0583-000		1	GUIDE, COLLAR, REAR	
4	FF5-9204-000		1	PANEL, RIGHT	FINISHER-E1
	FF6-2198-000		1	PANEL, RIGHT	FINISHER-M1
4A	FB5-0705-000		1	LABEL, STAPLE	
5	FB5-0601-000		1	PANEL, REAR	FINISHER-E1
	FB6-4194-000		1	PANEL, REAR	FINISHER-M1
6	FB5-0675-000		1	COVER, STAPLE INTERNAL	FINISHER-E1
	FB6-4195-000		1	COVER, STAPLE INTERNAL	FINISHER-M1
7	FB5-0701-000		1	GUIDE, 1	FINISHER-E1
	FB6-4615-000		1	GUIDE, 1	FINISHER-M1
8	FB5-0702-000		1	GUIDE, 2	FINISHER-E1
	FB6-4616-000		1	GUIDE, 2	FINISHER-M1
9	FF5-9185-000		1	PLATE, TRAY SUPPORT, FRONT	
10	FF5-9186-000		1	PLATE, TRAY SUPPORT, REAR	
11	FB5-0658-000		1	STACK TRAY, 1	
12	FB5-0659-000		1	STACK TRAY, 2	
13	FS7-2242-000		2	SPRING, TENSION	
14	WG8-5362-000		1	IC, TLP1241, PHOTO-INTERRUPTER	S11 J702
15	FB5-0593-000		1	HANDLE	
16	FB5-0594-000		1	MOUNT, HANDLE	FINISHER-E1
	FB6-4629-000		1	MOUNT, HANDLE	FINISHER-M1
17	FS7-2246-000		1	SPRING, COMPRESSION	
18	XD9-0117-000		1	RING,E	
19	FA6-8379-000		1	ARM, SENSOR, 2	
20	FB5-0662-000		1	COVER, SENSOR	
21	FA5-4471-000		1	SPRING, TORSION	

FIGURE & KEY NO.	PART NUMBER	RANK	QTY	DESCRIPTION	SERIAL NUMBER / REMARKS
Q10 - 22	FG3-0281-000		1	CABLE, STACK TRAY CONNECTING	J701,702
23	FB5-0703-000		1	GUIDE, 3	FINISHER-E1
	FB6-4617-000		1	GUIDE, 3	FINISHER-M1
24	FB5-0704-000		1	GUIDE, 4	FINISHER-E1
	FB6-4618-000		1	GUIDE, 4	FINISHER-M1
25	FB5-0655-000		2	PLATE, GROUNDING	FINISHER-E1
	FB6-4183-000		2	PLATE, GROUNDING	FINISHER-M1
26	FB3-9749-000		1	LABEL, "HANDLE"	FINISHER-M1
501	XB1-2400-606		AR	SCREW,MACH.,TRUSS HEAD,M4X6	
502	XB2-7300-606		AR	SCREW,W/WASHER,M3X6	
503	XB2-7400-606		AR	SCREW,W/WASHER,M4X6	
504	XB4-7300-809		AR	SCREW,TAPPING,TRUSS HEAD,M3X8	
505	XB4-7400-809		AR	SCREW,TAPPING,TRUSS HEAD,M4X8	
506	XB4-7401-209		AR	SCREW,TAPPING,TRUSS HEAD,M4X12	
507	XD2-1100-242		1	RING,E	



# FIGURE Q11

## INTERNAL COMPONENTS 1

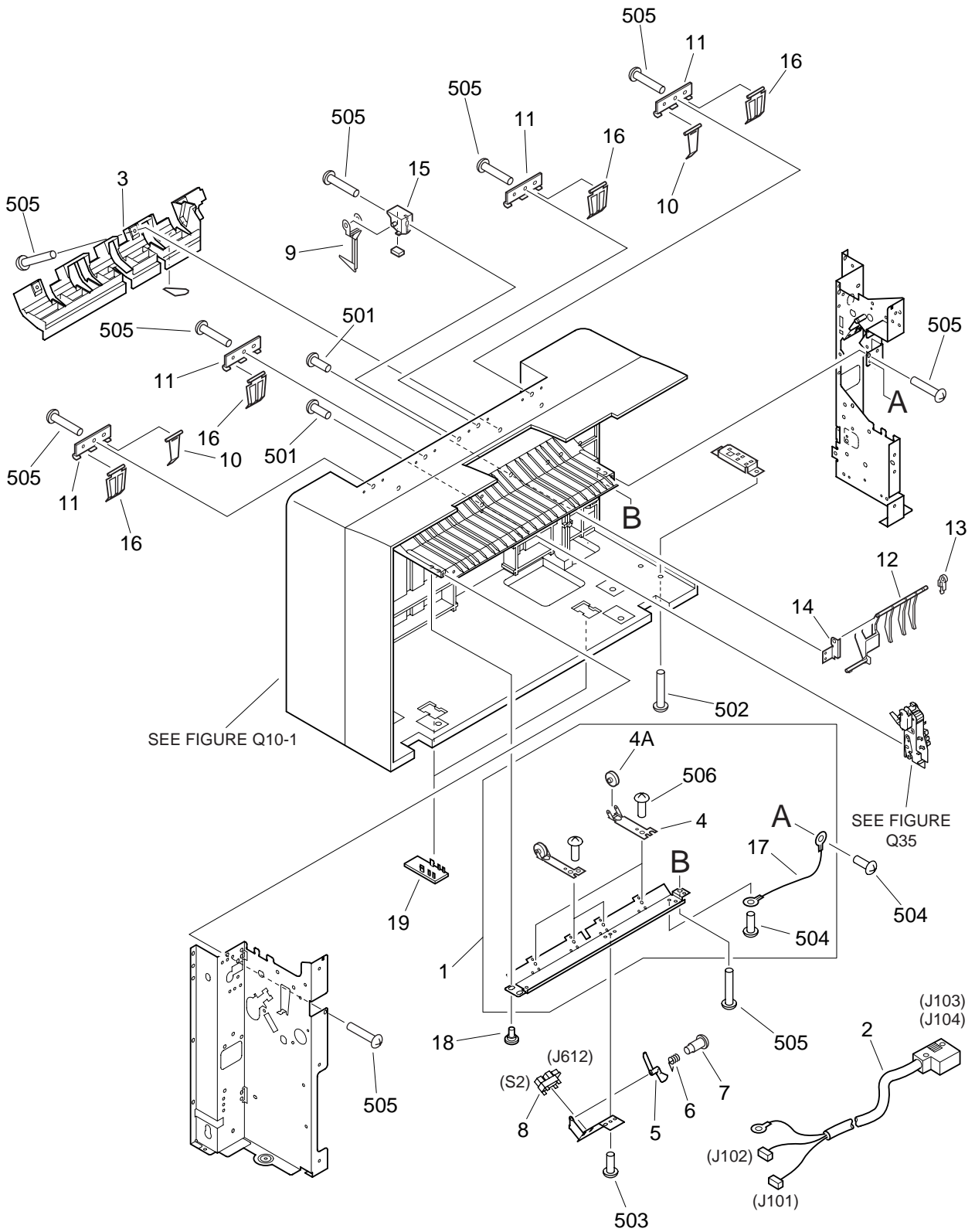


FIGURE & KEY NO.	PART NUMBER	RANK	QTY	DESCRIPTION	SERIAL NUMBER / REMARKS
Q11 -	NPN		RF	INTERNAL COMPONENTS 1	
1	FG6-9205-000		1	FEED ROLLER UNIT	FINISHER-M1
	FG6-9500-000		1	FEED ROLLER UNIT	FINISHER-E1
2	FG3-0275-000		1	CABLE, INTERFACE CONNECTING	FINISHER-E1 J101-104
	FG3-2762-000		1	CABLE, INTERFACE	FINISHER-M1 J101-104
3	FF5-9193-000		1	GUIDE, LOWER	FINISHER-E1
	FF6-2194-000		1	GUIDE, LOWER	FINISHER-M1
4	FF6-2285-000		2	HOLDER, FEED ROLLER	
4A	FB6-4632-000		1	ROLLER, FEED	
5	FB5-0736-000		1	FLAG, FEED SENSOR	
6	FB5-0738-000		1	SPRING, TORSION	
7	FE9-0018-000		1	SCREW, STEPPED, M3	
8	WG8-5362-000		1	IC, TLP1241, PHOTO-INTERRUPTER	S2 J612
9	FB5-0595-000		1	PLATE, END, A	FINISHER-E1
	FB6-4191-000		1	PLATE, END, 1	FINISHER-M1
10	FB5-0596-000		2	PLATE, END, B	FINISHER-E1
	FB6-4192-000		2	PLATE, END, 2	FINISHER-M1
11	FB5-0598-000		4	SUPPORT, END PLATE, B	FINISHER-E1
	FB6-4193-000		4	SUPPORT, END PLATE, 2	FINISHER-M1
12	FB5-0697-000		1	FLAG, PAPER SENSOR, 2	
13	FB5-0698-000		1	MOUNT, FLAG SUPPORT	FINISHER-E1
	FB6-4614-000		1	MOUNT, FLAG SUPPORT	FINISHER-M1
14	FB5-0699-000		1	PLATE, FLAG SUPPORT	
15	FF5-9195-000		1	HOLDER, END PLATE, A	FINISHER-E1
	FF6-2195-000		1	HOLDER, END PLATE, A	FINISHER-M1
16	FB5-0684-000		4	PLATE, END, C	FINISHER-E1
	FB6-4613-000		4	PLATE, END, 3	FINISHER-M1
17	FF3-3664-000		1	CABLE, GROUNDING	
18	FS5-9597-000		2	SCREW, STEPPED	
19	FB4-6261-000		2	COVER, BLANKING	

FIGURE & KEY NO.	PART NUMBER	R A N K	Q' T Y	DESCRIPTION	SERIAL NUMBER / REMARKS
Q11 - 501	XB1-2300-606		2	SCREW,MACH.,TRUSS HEAD,M3X6	
502	XB1-2401-609		2	SCREW,MACH.,TRUSS HEAD,M4X16	
503	XB6-7400-609		1	SCREW,TP,M4X6	
504	XB2-7400-606		AR	SCREW,W/WASHER,M4X6	
505	XB4-7401-209		AR	SCREW,TAPPING,TRUSS HEAD,M4X12	
506	XB6-7400-409		4	SCREW,TP,M4X4	

# FIGURE Q12

## INTERNAL COMPONENTS 2

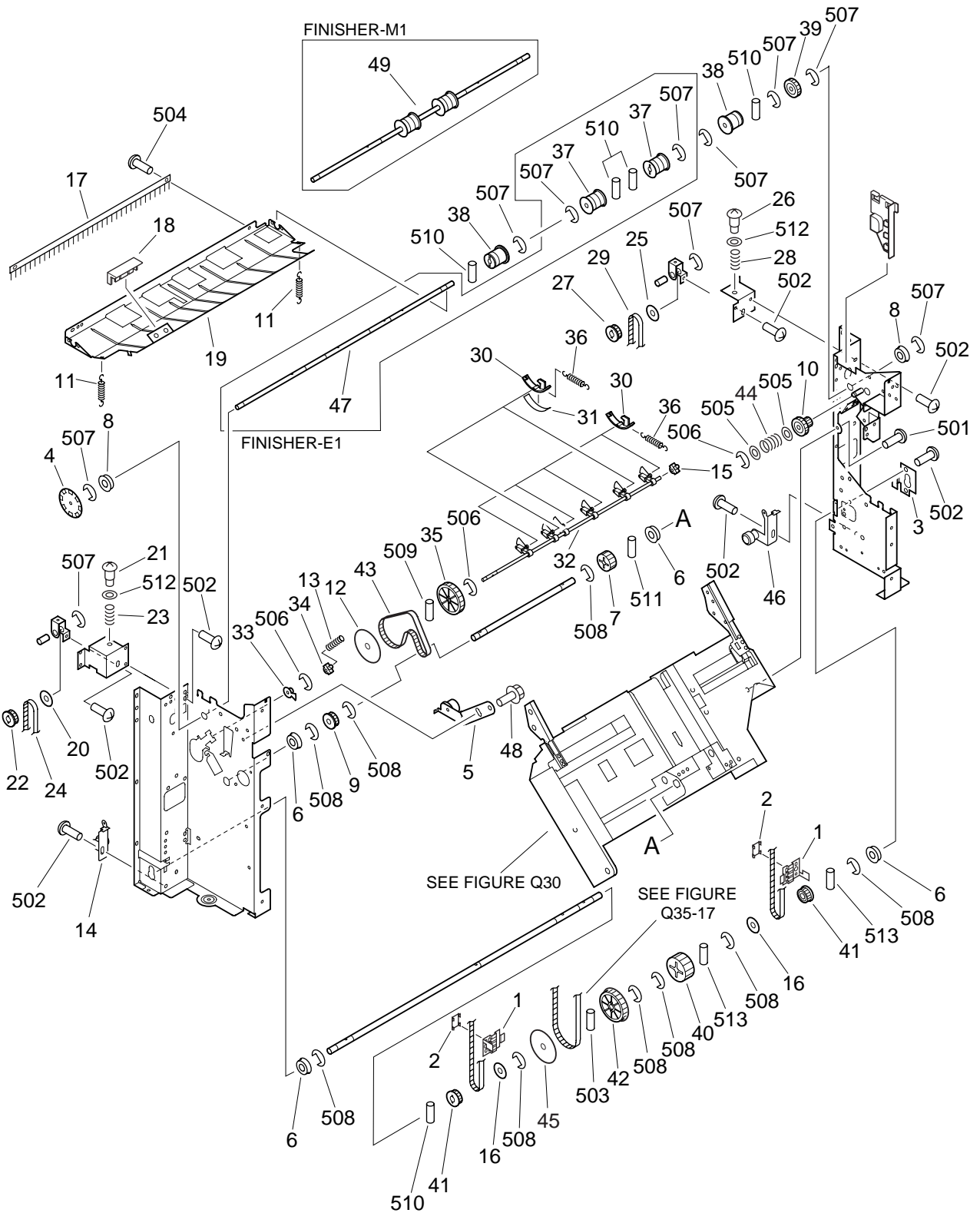


FIGURE & KEY NO.	PART NUMBER	RANK	QTY	DESCRIPTION	SERIAL NUMBER / REMARKS
Q12 -	NPN		RF	INTERNAL COMPONENTS 2	
1	FB5-0584-000		2	PLATE, BELT BRACKET	
2	FB5-0585-000		2	PLATE, BELT SUPPORT	
3	FB5-0586-000		1	PLATE, STOP	
4	FB5-0589-000		1	PLATE, CLOCK	
5	FF5-9173-000		1	PLATE, TENSION	
6	RS1-1054-000		4	BUSHING	
7	FS2-0145-000		1	GEAR, 23T	
8	FS2-1608-000		2	BUSHING	
9	FS2-3488-000		1	PULLEY, 32T	
10	FS7-0487-000		1	GEAR, 24T/23T	FINISHER-E1
	FU3-0424-000		1	GEAR,24T/18T	FINISHER-M1
11	FS7-2241-000		2	SPRING, TENSION	
12	FS5-6709-000		1	FLANGE	
13	FS7-2255-000		1	SPRING, COMPRESSION	
14	FF5-9202-000		1	PLATE, COLLAR SUPPORT, FRONT	
15	FB5-0654-000		1	BUSHING	
16	FB1-9860-000		2	FLANGE	
17	FB5-0590-000		1	ELIMINATOR, STATIC CHARGE	
18	FB5-0729-000		1	HANDLE, UPPER GUIDE	
19	FB5-0728-000		1	GUIDE,UPPER	FINISHER-E1
	FB6-4182-000		1	GUIDE, UPPER	FINISHER-M1
20	FB1-9860-000		1	FLANGE	
21	FS1-9167-000		1	SCREW,STEPPED,M4	
22	FS5-3764-000		1	PULLEY, 20T	
23	FS7-2243-000		1	SPRING, COMPRESSION	
24	XF2-1318-860		1	BELT, TIMING	
25	FB1-9860-000		1	FLANGE	
26	FS1-9167-000		1	SCREW,STEPPED,M4	
27	FS5-3764-000		1	PULLEY, 20T	

FIGURE & KEY NO.	PART NUMBER	RANK	QTY	DESCRIPTION	SERIAL NUMBER / REMARKS
Q12 - 28	FS7-2243-000		1	SPRING, COMPRESSION	
29	XF2-1318-860		1	BELT, TIMING	
30	FB5-0652-000		6	ROLLER	FINISHER-E1
	FB6-4630-000		6	ROLLER, REVERSE	FINISHER-M1
31	FB5-0653-000		2	SHEET, ROLLER	
32	FB5-0650-000		1	SHAFT, ROLLER	
33	FB5-0651-000		1	FLAG, ROLLER SENSOR	
34	FB5-0654-000		1	BUSHING	
35	FS5-3768-000		1	PULLEY, 64T	
36	FS7-2254-000		6	SPRING, TENSION	
37	FB5-0730-000		2	ROLLER, FEED, A	FINISHER-E1
38	FB5-0731-000		2	ROLLER, FEED, B	
39	FS7-0499-000		1	GEAR, 23T	FINISHER-E1
	FU3-0425-000		1	GEAR, 28T	FINISHER-M1
40	FS7-0486-000		1	GEAR, 42T	
41	FS5-3764-000		2	PULLEY, 20T	
42	FS5-3765-000		1	PULLEY, 45T	
43	XF9-0423-000		1	FLAT BELT, TIMING, 170T	
44	FS7-2257-000		1	SPRING, COMPRESSION	
45	FS5-6709-000		1	FLANGE	
46	FF5-9201-000		1	PLATE, COLLAR SUPPORT, REAR	
47	FB5-0732-000	N	1	SHAFT, FEED ROLLER	FINISHER-E1
48	XA9-0963-000		1	SCREW,RS,M4X10	
49	FB6-4185-000		1	ROLLER, FEED	FINISHER-M1
501	XB1-2400-606		AR	SCREW,MACH.,TRUSS HEAD,M4X6	
502	XB1-2400-609		AR	SCREW,MACH.,TRUSS HEAD,M4X6	
503	XD3-2200-162		1	PIN,DOWEL	
504	XB1-2300-607		2	SCREW,MACH.,TRUSS HEAD,M3X6	
505	XD1-1104-135		2	SHIM	
506	XD2-1100-322		AR	RING,E	

FIGURE & KEY NO.	PART NUMBER	RANK	QTY	DESCRIPTION	SERIAL NUMBER / REMARKS
Q12 - 507	XD2-1100-502		AR	RING,E	
508	XD2-1100-642		AR	RING,E	
509	XD3-2160-102		1	PIN,DOWEL	
510	XD3-2200-122		AR	PIN,DOWEL	
511	XD3-2200-142		AR	PIN,DOWEL	
512	XD1-1106-239		2	SHIM	
513	XD3-2300-202		2	PIN,DOWEL	

# FIGURE Q13

## INTERNAL COMPONENTS 3

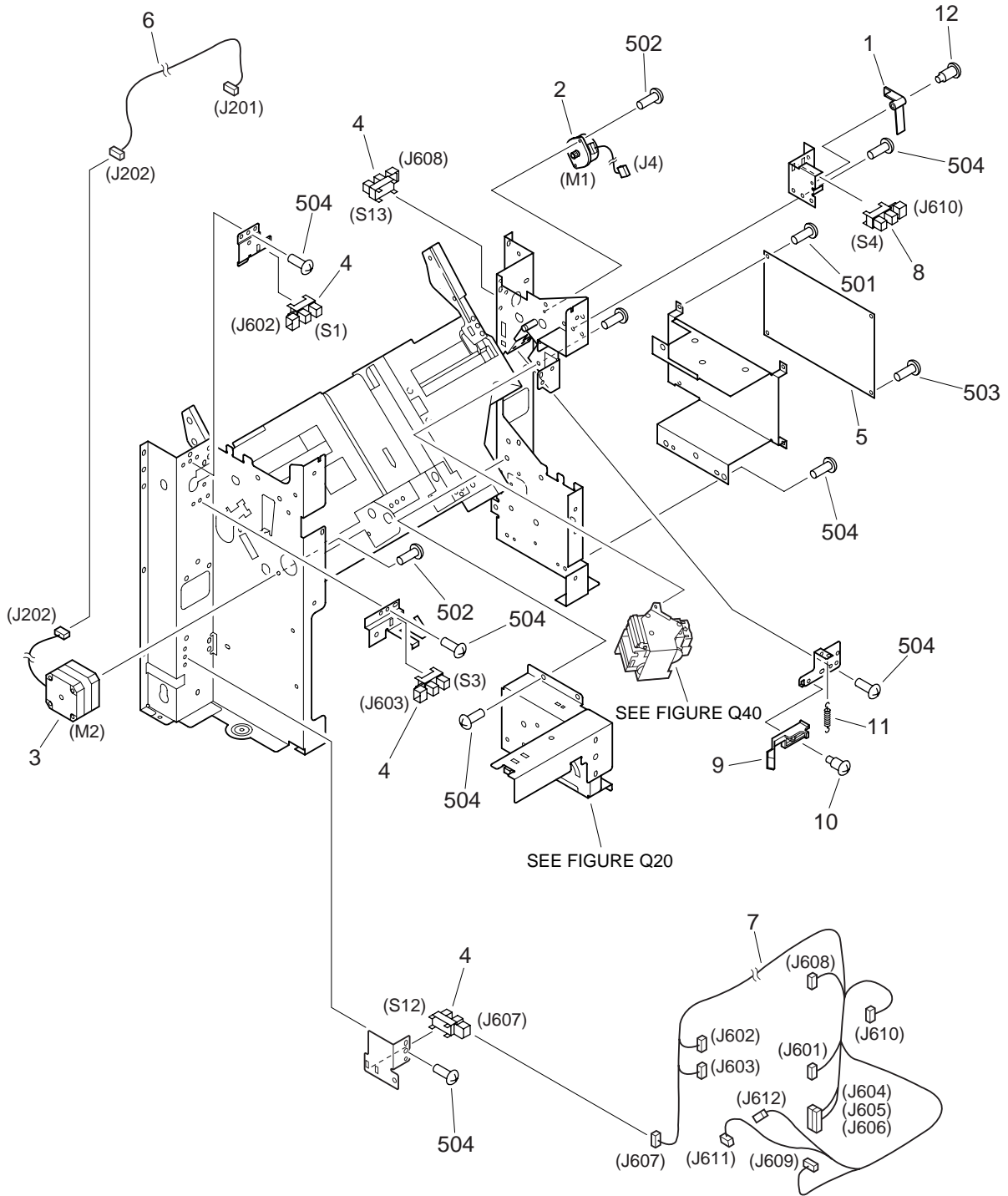




FIGURE & KEY NO.	PART NUMBER	R A N K	Q' T Y	DESCRIPTION	SERIAL NUMBER / REMARKS
Q13 -	NPN		RF	INTERNAL COMPONENTS 3	
1	FB5-0740-000		1	FLAG, JOINT SWITCH	
2	FH6-1667-000		1	MOTOR, STEPPING, DC 4.8W	M1 J4
3	FH6-1669-000		1	MOTOR, STEPPING, DC 2.46W	M2 J202
4	WG8-5362-000		4	IC, TLP1241, PHOTO-INTERRUPTER	S1,3,12,13 J602,603,607,608
5	FG3-0274-020		1	DC CONTROLLER PCB ASSEMBLY	FINISHER-E1
	FG3-2761-000		1	DC CONTROLLER PCB ASSEMBLY	FINISHER-M1
6	FG3-0276-000		1	CABLE, MOTOR CONNECTING	J201,202
7	FG3-0280-000		1	CABLE, FRAME	J601-612
8	WG8-5362-000		1	IC, TLP1241, PHOTO-INTERRUPTER	S4 J610
9	FB5-0722-000		1	GUIDE, STAPLE	
10	FS2-9461-000		1	SCREW, STEPPED, M3	
11	FS7-2245-000		1	SPRING, TENSION	
12	FE9-0018-000		1	SCREW, STEPPED, M3	
501	XB1-2300-606		3	SCREW,MACH.,TRUSS HEAD,M3X6	
502	XB1-2300-609		AR	SCREW,MACH.,TRUSS HEAD,M3X6	
503	XB2-7300-606		AR	SCREW,W/WASHER,M3X6	
504	XB1-2400-609		AR	SCREW,MACH.,TRUSS HEAD,M4X6	

# FIGURE Q30

## OPERATING TRAY ASSEMBLY

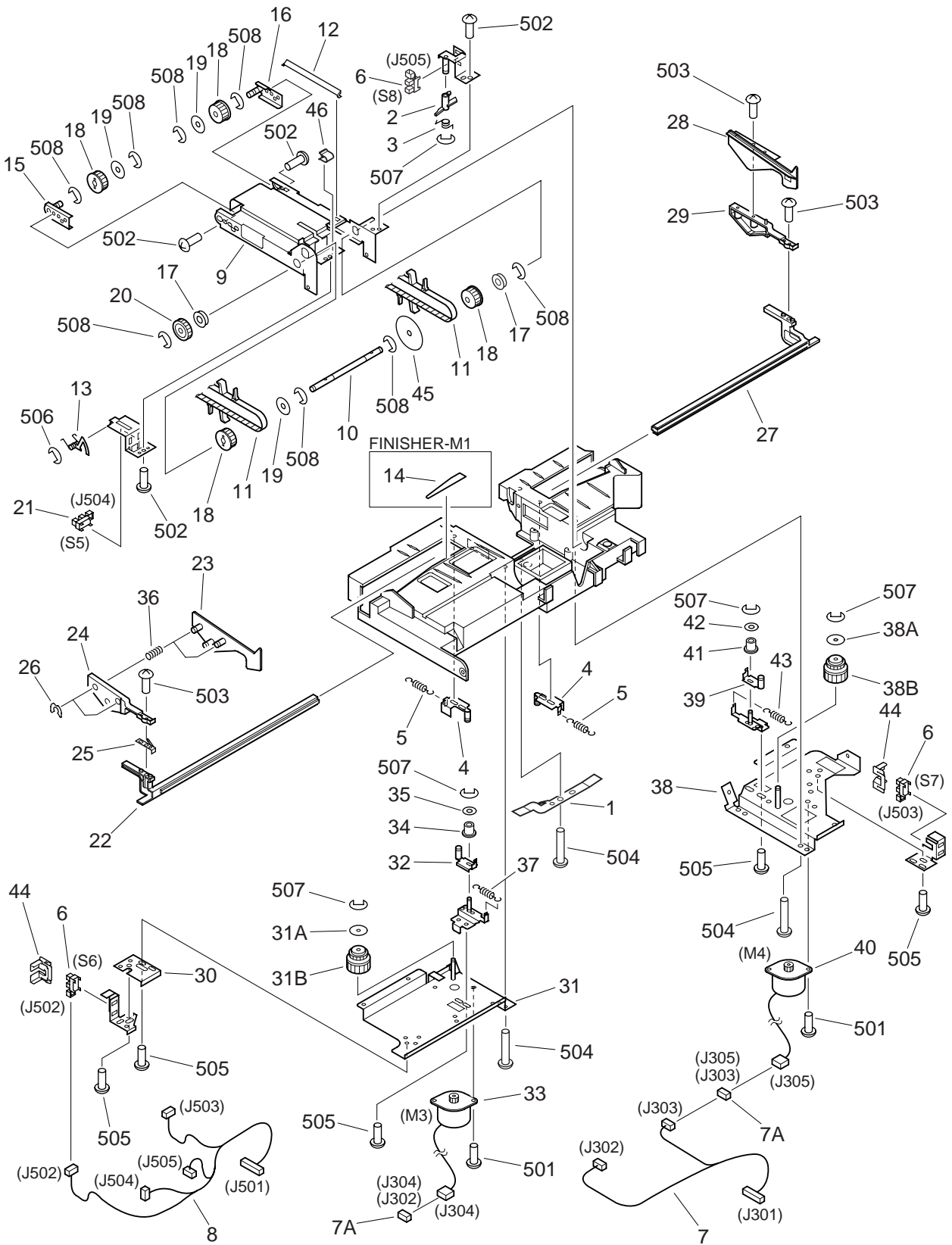
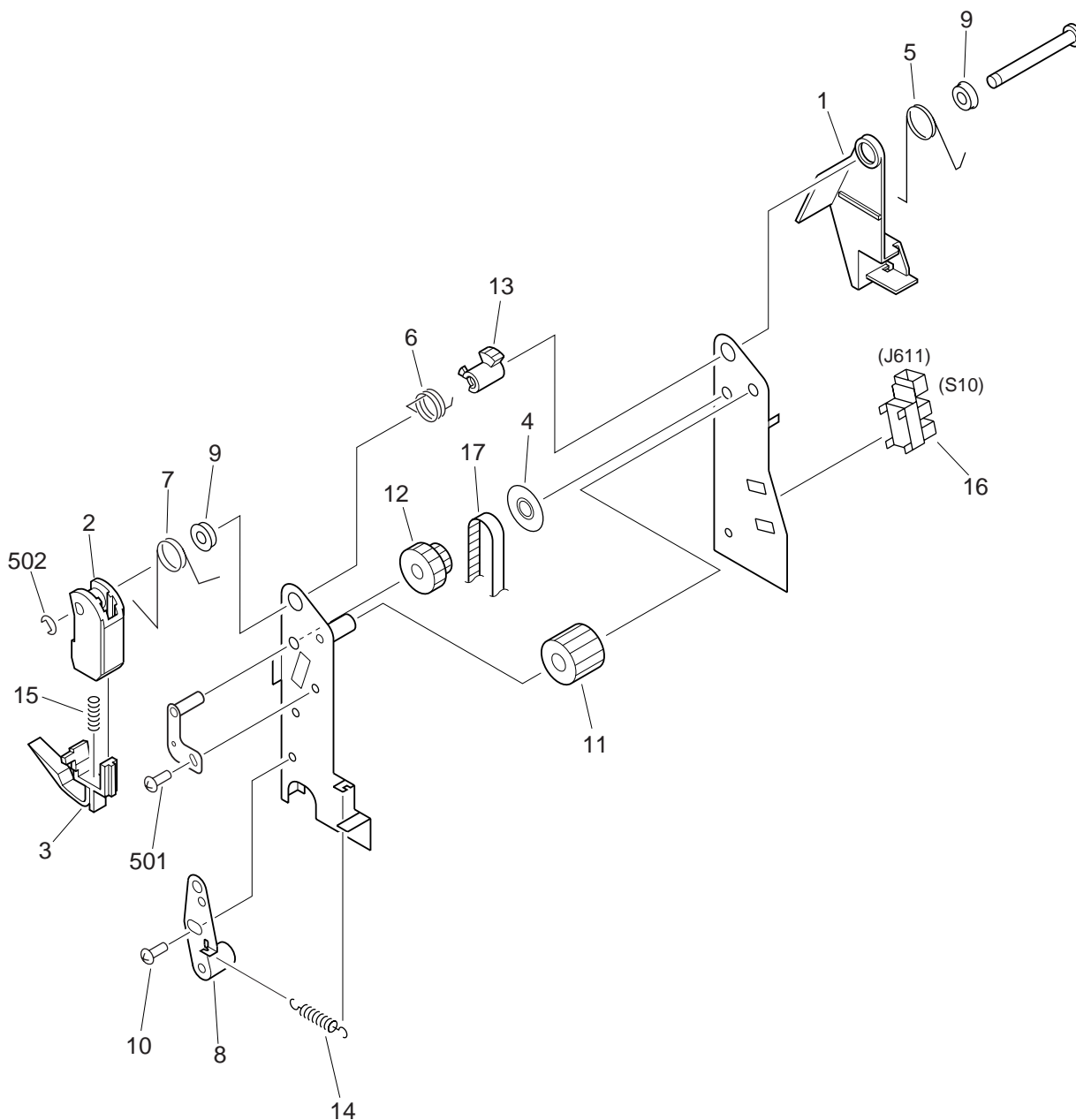


FIGURE & KEY NO.	PART NUMBER	RANK	QTY	DESCRIPTION	SERIAL NUMBER / REMARKS
Q30 -	FG6-3971-160		1	OPERATING TRAY ASSEMBLY	FINISHER-E1
	FG6-9193-000		1	OPERATING TRAY ASSEMBLY	FINISHER-M1
1	FB5-0617-000		1	PLATE, GROUNDING	
2	FB5-0624-000		1	FLAG, PAPER SENSOR	
3	FB5-0625-000		1	SPRING, TORSION	
4	FF5-9182-040		2	PLATE, GUIDE COLLAR ADJUSTING	
5	FS7-2253-000		2	SPRING, TENSION	
6	WG8-5362-000		3	IC, TLP1241, PHOTO-INTERRUPTER	S6,7,8 J502,503,505
7	FG3-0277-000		1	CABLE, ADJUSTMENT MOTOR	J301-303
7A	VS1-5057-006		2	CONNECTOR, SNAP TIGHT	J302,304,303,305
8	FG3-0279-000		1	CABLE, OPERATING TRAY	J501-505
9	FB5-0605-000		1	PLATE, OPERATING TRAY	
10	FB5-0608-000		1	SHAFT, PULLEY	
11	FF5-9196-030		2	BELT, PAPER FEED	
12	FB5-0616-000		1	GUIDE, PAPER	FINISHER-E1
	FB6-4622-000		1	GUIDE, PAPER	FINISHER-M1
13	FF5-9175-000		1	MOUNT, PAPER SENSOR	
14	FB6-4181-000		1	SHEET, MYLAR	FINISHER-M1
15	FF5-9176-000		1	PLATE, PULLEY, FRONT	
16	FF5-9177-000		1	PLATE, PULLEY, REAR	
17	FS2-1608-000		2	BUSHING	
18	FS5-3767-000		4	PULLEY, 22T	
19	FS5-6712-000		3	FLANGE	
20	FS7-0499-000		1	GEAR, 23T	
21	WG8-5362-000		1	IC, TLP1241, PHOTO-INTERRUPTER	S5 J504
22	FB5-0610-000		1	RACK, ADJUSTMENT, FRONT	
23	FB5-0611-000		1	PLATE, ADJUSTMENT, FRONT	FINISHER-E1
	FB6-4623-000		1	PLATE, ADJUSTMENT, FRONT	FINISHER-M1
24	FB5-0612-000		1	SUPPORT, ADJUSTMENT, FRONT	FINISHER-E1
	FB6-4624-000		1	SUPPORT, ADJUSTMENT, FRONT	FINISHER-M1

FIGURE & KEY NO.	PART NUMBER	RANK	QTY	DESCRIPTION	SERIAL NUMBER / REMARKS
Q30 - 25	FB5-0618-000		1	SPRING, LEAF	
26	XD9-0117-000		3	RING,E	
27	FB5-0613-000		1	RACK, ADJUSTMENT, REAR	
28	FB5-0614-000		1	PLATE, ADJUSTMENT, REAR	FINISHER-E1
	FB6-4625-000		1	PLATE, ADJUSTMENT, REAR	FINISHER-M1
29	FB5-0615-000		1	SUPPORT, ADJUSTMENT, REAR	FINISHER-E1
	FB6-4626-000		1	SUPPORT, ADJUSTMENT, REAR	FINISHER-M1
30	FB5-0633-000		1	PLATE, ADJUSTING, FRONT	
31	FF5-9178-000		1	PLATE, DRIVE, FRONT	
31A	FS5-6717-020		1	FLANGE	
31B	FS7-0500-000		1	GEAR, 18T/48T	
32	FF5-9180-000		1	COLLAR	
33	FH6-1668-000		1	MOTOR, STEPPING, DC 4.8W	M3 J304
34	FS5-6713-000		1	COLLAR	
35	FS5-6716-000		1	FLANGE	
36	FS7-2252-020		2	SPRING, COMPRESSION	
37	FS7-2253-000		1	SPRING, TENSION	
38	FF5-9179-000		1	PLATE, DRIVE, REAR	
38A	FS5-6717-020		1	FLANGE	
38B	FS7-0500-000		1	GEAR, 18T/48T	
39	FF5-9180-000		1	COLLAR	
40	FH6-1668-000		1	MOTOR, STEPPING, DC 4.8W	M4 J305
41	FS5-6713-000		1	COLLAR	
42	FS5-6716-000		1	FLANGE	
43	FS7-2253-000		1	SPRING, TENSION	
44	FB5-0638-000		2	GUIDE, SENSOR FLAG	
45	FS5-6738-000		1	FLANGE	
46	FB6-2734-000		1	SPRING,LEAF	
501	XB1-2300-609		AR	SCREW,MACH.,TRUSS HEAD,M3X6	
502	XB2-5300-609		AR	SCREW,W/WASHER,M3X6	

FIGURE & KEY NO.	PART NUMBER	R A N K	Q' T Y	DESCRIPTION	SERIAL NUMBER / REMARKS
Q30 - 503	XB4-7300-809		AR	SCREW,TAPPING,TRUSS HEAD,M3X8	
504	XB4-7401-209		AR	SCREW,TAPPING,TRUSS HEAD,M4X12	
505	XB6-7400-609		AR	SCREW,TP,M4X6	
506	XD2-1100-242		AR	RING,E	
507	XD2-1100-322		AR	RING,E	
508	XD2-1100-502		AR	RING,E	

# FIGURE Q35 PAPER HEIGHT SENSOR ASSEMBLY



NOTE : This assembly does not include the part shown with key No. 17.

FIGURE & KEY NO.	PART NUMBER	RANK	QTY	DESCRIPTION	SERIAL NUMBER / REMARKS
Q35 -	FG6-3980-000		1	PAPER HEIGHT SENSOR ASSEMBLY	FINISHER-E1
	FG6-9197-000		1	PAPER HEIGHT SENSOR ASSEMBLY	FINISHER-M1
1	FB5-0687-000		1	FLAG, PAPER SENSOR	
2	FB5-0688-000		1	MOUNT, RETAINING LEVER	FINISHER-E1
	FB6-4627-000		1	MOUNT, RETAINING LEVER	FINISHER-M1
3	FB5-0689-000		1	LEVER, RETAINING	FINISHER-E1
	FB6-4628-000		1	LEVER, RETAINING	FINISHER-M1
4	FB5-0691-020		1	FLANGE	
5	FB5-0694-000		1	SPRING, TORSION	
6	FB5-0695-000		1	SPRING, TORSION	
7	FB5-0696-000		1	SPRING, TORSION	
8	FF5-9190-000		1	PLATE, TENSION	
9	FS5-1907-000		2	BUSHING	
10	FS5-9436-000		1	SCREW,MACH.,TRUSS HEAD,M4X5	
11	FS7-0488-000		1	GEAR, 28T	
12	FS7-0489-020		1	GEAR, 28T/PULLEY, 15T	
13	FS7-0490-000		1	GEAR, 28T	
14	FS7-2247-000		1	SPRING, TENSION	
15	FS7-2251-000		1	SPRING, COMPRESSION	
16	WG8-5362-000		1	IC, TLP1241, PHOTO-INTERRUPTER	S10 J611
17	XF2-1123-740		1	BELT, TIMING	SEE NOTE
501	XB1-2300-609		1	SCREW,MACH.,TRUSS HEAD,M3X6	
502	XD2-1100-202		1	RING,E	

# FIGURE QB LIST OF CONNECTORS

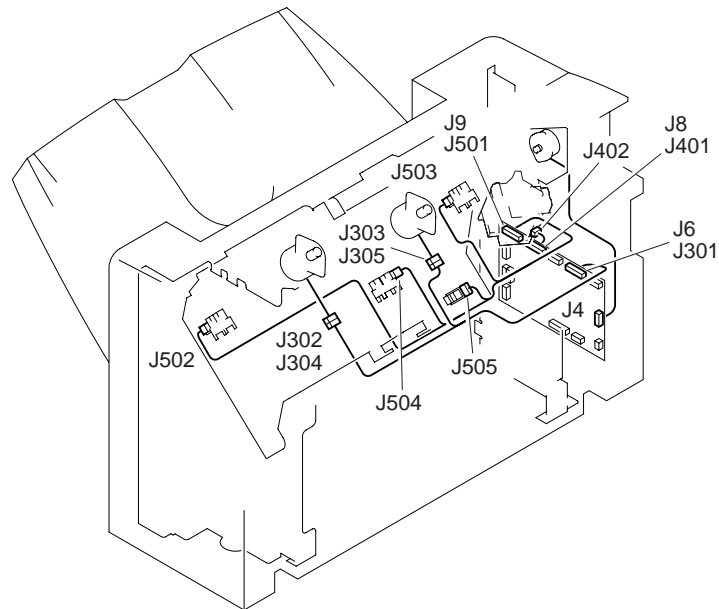
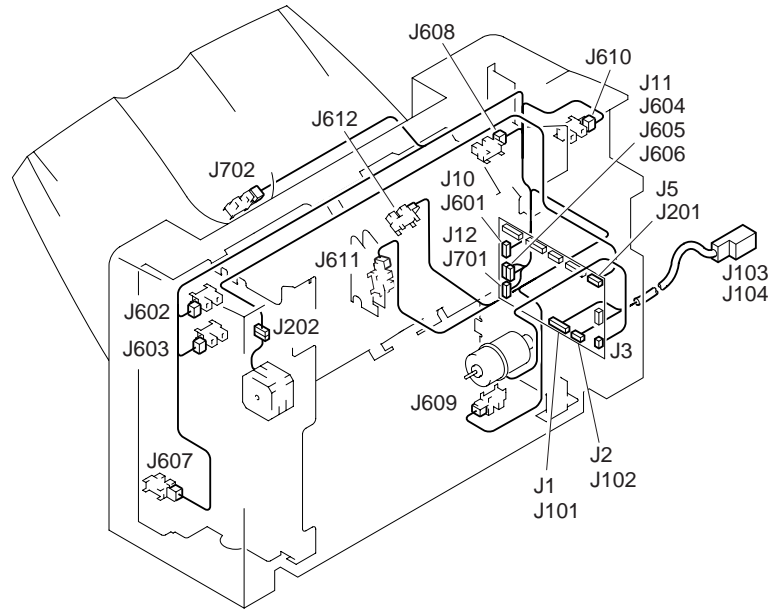




FIGURE & KEY NO.	PART NUMBER	RANK	QTY	DESCRIPTION	SERIAL NUMBER / REMARKS
Q B -	NPN		RF	LIST OF CONNECTORS	
J1	PCB			DC CONTROLLER	
J2	PCB			DC CONTROLLER	
J3	NPN			STACK TRAY UP/DOWN MOTOR	M5
	PCB			DC CONTROLLER	
J4	NPN			DELIVERY MOTOR	M1
	PCB			DC CONTROLLER	
J5	PCB			DC CONTROLLER	
J6	PCB			DC CONTROLLER	
J8	PCB			DC CONTROLLER	
J9	PCB			DC CONTROLLER	
J10	PCB			DC CONTROLLER	
J11	PCB			DC CONTROLLER	
J12	PCB			DC CONTROLLER	
J101	VS3-5080-007		1	CONNECTOR, 7P, FEMALE	
J102	WT1-5155-000		6	TERMINAL	FINISHER-M1
	VS1-6909-002		1	CONNECTOR, 2P, FEMALE	FINISHER-E1
	VS3-5083-002		1	CONNECTOR, 2P, FEMALE	
	WS3-5160-000		2	SOCKET CONTACT, 18-24AWG	
J103	FH2-6481-000		1	HOUSING	
J104	VS3-5080-007		1	CONNECTOR, 7P, FEMALE	
	WT1-5155-000		6	TERMINAL	
	FH2-6481-000		1	HOUSING	
	SYS			TO COPIER	
	WS3-5044-000		3	SOCKET, CONTACT, 18-24AWG	
J201	VS1-0279-006		1	CONNECTOR, 6P, FEMALE	
	WT1-0240-000		6	SOCKET CONTACT, 20-26AWG	
J202	NPN			PAPER OPERATING MOTOR	M2
	VS1-0280-006		1	CONNECTOR, 6P, MALE	
	WS3-1057-000		6	PIN CONTACT, 20-22AWG	

FIGURE & KEY NO.	PART NUMBER	RANK	QTY	DESCRIPTION	SERIAL NUMBER / REMARKS
Q B - J301	VS1-0842-012		1	CONNECTOR, 12P, FEMALE	
J302	VS1-0842-006		1	CONNECTOR, 6P, FEMALE	
	VS1-5057-006		1	CONNECTOR, SNAP TIGHT	
J303	VS1-0842-006		1	CONNECTOR, 6P, FEMALE	
	VS1-5057-006		1	CONNECTOR, SNAP TIGHT	
J304	NPN			FRONT ADJUSTMENT MOTOR	M3
	VS1-5057-006		1	CONNECTOR, SNAP TIGHT	
J305	NPN			REAR ADJUSTMENT MOTOR	M4
	VS1-5057-006		1	CONNECTOR, SNAP TIGHT	
J401	VS1-5824-013		1	CONNECTOR, 13P, FEMALE	
J402	WS3-5358-000		13	SOCKET CONTACT, 22-26AWG	
	NPN			STAPLE UNIT	M6
	VS1-5824-013		1	CONNECTOR, 13P, FEMALE	
	WS3-5358-000		13	SOCKET CONTACT, 22-26AWG	
J501	VS1-6313-012		1	CONNECTOR, 12P, FEMALE	
J502	NPN			FRONT ADJUSTMENT HP SENSOR	S6
	VS1-6321-003		1	CONNECTOR, 3P, FEMALE	
J503	NPN			REAR ADJUSTMENT HP SENSOR	S7
	VS1-6321-003		1	CONNECTOR, 3P, FEMALE	
J504	NPN			OPERATING TRAY PAPER SENSOR	S5
J505	VS1-6321-003		1	CONNECTOR, 3P, FEMALE	
	NPN			PAPER FEEDER HP SENSOR	S8
	VS1-6321-003		1	CONNECTOR, 3P, FEMALE	
J601	VS1-0842-006		1	CONNECTOR, 6P, FEMALE	
J602	NPN			DELIVERY MOTOR CLOCK SENSOR	S1
J603	VS1-0842-003		1	CONNECTOR, 3P, FEMALE	
	NPN			RETURN ROLLER HP SENSOR	S3
	VS1-0842-003		1	CONNECTOR, 3P, FEMALE	
J604	VS1-0842-009		1	CONNECTOR, 9P, FEMALE	
	VS9-5009-018		1	HOLDER, CONNECTOR, 18P	

FIGURE & KEY NO.	PART NUMBER	RANK	QTY	DESCRIPTION	SERIAL NUMBER / REMARKS
Q B - J605	VS1-0852-009		1	CONNECTOR, 9P, FEMALE	
	VS9-5009-018		1	HOLDER, CONNECTOR, 18P	
J606	VS9-5009-018		1	HOLDER, CONNECTOR, 18P	
J607	NPN			STACK TRAY LOWER LIMIT SENSOR	S12
	VS1-0842-003		1	CONNECTOR, 3P, FEMALE	
J608	NPN			STACK TRAY UPPER LIMIT SENSOR	S13
	VS1-0842-003		1	CONNECTOR, 3P, FEMALE	
J609	NPN			STACK TRAY UP/DOWN SENSOR	S9
	VS1-0842-003		1	CONNECTOR, 3P, FEMALE	
J610	NPN			JOINT SENSOR	S4
J611	VS1-0842-003		1	CONNECTOR, 3P, FEMALE	
	NPN			STACK TRAY PAPER HEIGHT SENSOR	S10
	VS1-0842-003		1	CONNECTOR, 3P, FEMALE	
J612	NPN			INLET SENSOR	S2
	VS1-0842-003		1	CONNECTOR, 3P, FEMALE	
J701	VS1-0842-003		1	CONNECTOR, 3P, FEMALE	
J702	NPN			STACK TRAY PAPER SENSOR	S11
	VS1-0842-003		1	CONNECTOR, 3P, FEMALE	